



# June Highlights for Discovery Education

## Timely & Relevant Resources



*Find timely resources for all grade levels for each of these celebrations. Sign in to DE and select the link to explore.*

- [National Zoo & Aquarium Month](#)
- [World Oceans Day \(6/8\)](#)
- [Flag Day \(6/14\)](#)
- [Juneteenth \(6/19\)](#)
- [World Refugee Day \(6/20\)](#)

### Summer of Learning with Discovery Education

Discovery Education has a collection of resources designed to support your summer school program, no matter what you have planned.

Whether you're looking for curriculum support, at-home activities for students, or professional learning resources, we'll help you make this summer one to remember!

We recommend starting with the [Summer Learning Activities Channel](#), which is full of ready-to-use activities that cover a wide range of topics, subjects, and grades.

In addition, we have tons of subject-specific content resources perfect for summer learning, as well as engaging at-home resources that get the whole family involved! If you need to focus on professional learning, we have a variety of on-demand eLearning opportunities—so you can complete by the pool!

All these resources and more can be found in the [Summer Learning Channel](#).



# June Highlights for Discovery Education

## Timely & Relevant Resources



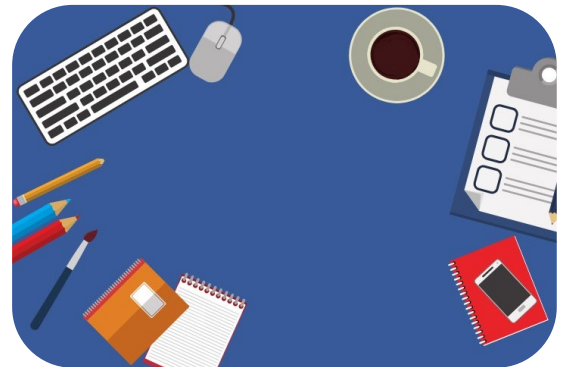
### June Activity Calendars

Explore ready-to-use activities for the month of June that provide students with opportunities to explore their curiosity around a variety of topics in our NEW daily activity calendars for grades K-8. View current and past calendars at any time in our [Activity Center](#).

May Calendars: [K-2](#) [3-5](#) [6-8](#)

### [PL Resource of the Month: Professional Learning Now Channel](#)

In this collection, explore microlearnings that cover topics such as remote teaching and learning, social-emotional learning, and culturally responsive teaching. Each microlearning provides a 3-5 minute burst of personalized, guided learning that seamlessly fits into a busy schedule.



### [Strategy of the Month: IDEA Share](#)

This strategy gives students an opportunity to provide and receive peer feedback using a framework that promotes a positive and supportive structure. . View all strategies in the [SOS Channel](#).

### [Feature of the Month: Copy a Studio Board](#)

Did you know? Once you find a ready-to-use activity for your classroom and students, you can assign it as is or copy it to make modifications! With just a few clicks, you can copy and customize to meet the needs of your students and lesson.

